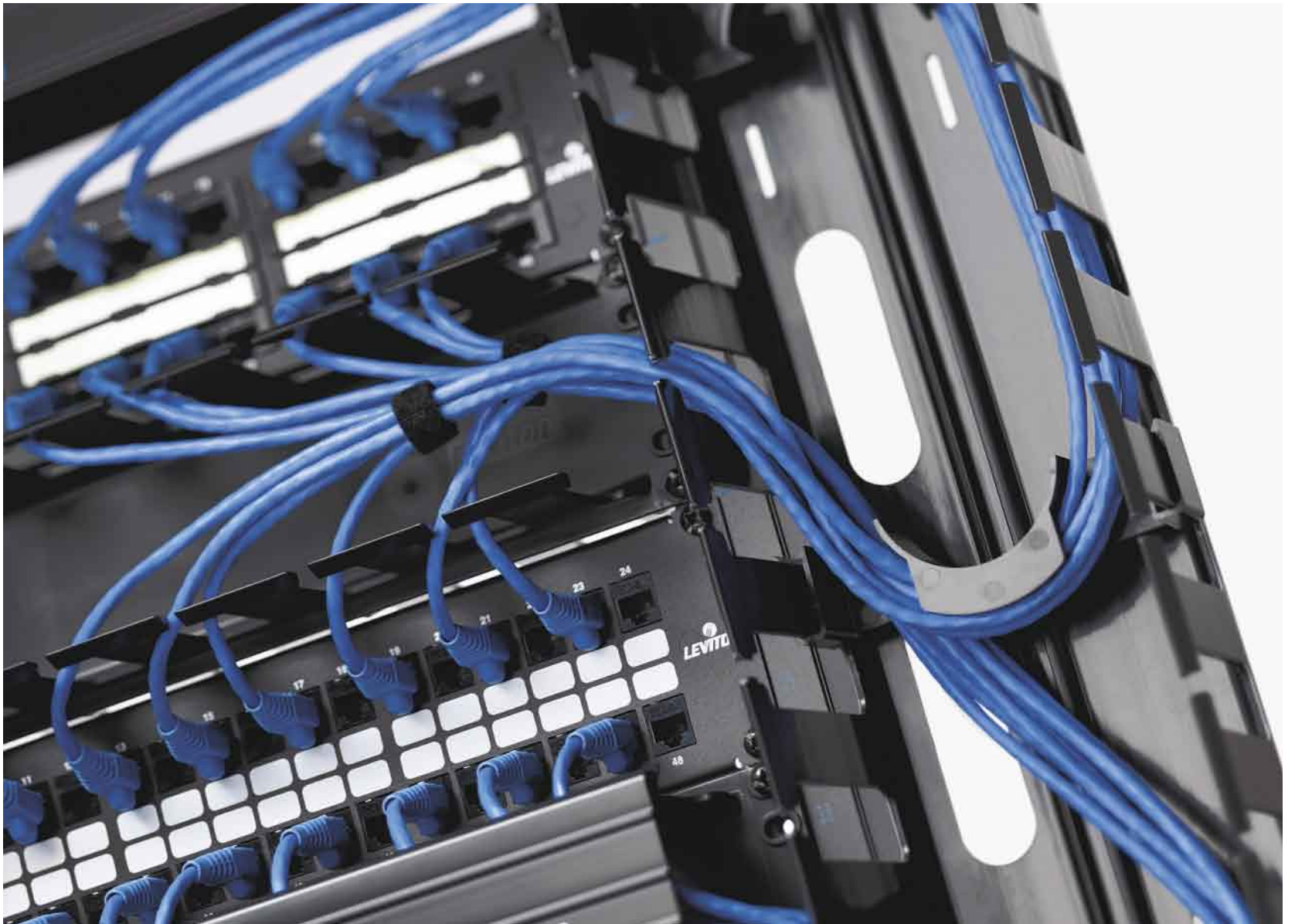


# CABLE MANAGEMENT



Leviton's wide offering of cable management solutions, including Versa-Duct®, Rack & Frame, Hook & Loop, Spectro-Link® Raceway Systems and Network Bays, increases the efficiency of network management and helps the network professional achieve a world-class infrastructure. Each solution is easy to install, adaptable to a variety of applications, and facilitates efficient moves, adds and changes.

## SECTION G CONTENTS

- G3 Versi-Duct Slotted Duct  
Cable Management
- G5 Rack & Frame Cable  
Management
- G11 Hook & Loop Cable  
Management
- G13 Network Bays & Frames
- G15 Spectro-Link Raceway  
System

## VERSI-DUCT® SLOTTED DUCT



### VERSI-DUCT SLOTTED DUCT CABLE MANAGEMENT SYSTEM

Leviton's unique Versi-Duct Slotted Duct System provides a simple, versatile solution for fiber and copper cable organization and management. Designed to fit on any standard 19" horizontal equipment rack, this innovative slotted duct system uses a small number of accessories to achieve a wide range of cable management solutions. Versi-Duct is the ideal system for efficient, adaptable rack and frame cable management.

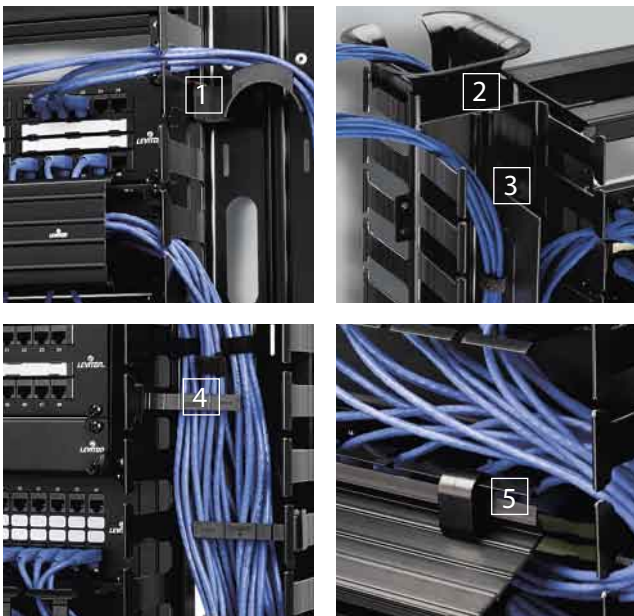
[A-C] Vertical Slotted Duct: Vertical slotted duct comes in 35" or 80" rack lengths in Front Only or Front and Rear configurations with covers.

[D-G] Horizontal Slotted Duct: Available in one-rack (1RU-1.75") or two-rack (2RU-3.5") unit sizes. Front Only or Front and Rear configurations with covers. Includes Bend Radius Compliant Router.

[H-M] Accessories: A versatile assortment of accessories snap easily into vertical and horizontal slotted duct to solve a variety of cable management challenges, including bend radius compliance, slack loop storage, cable retention and more.

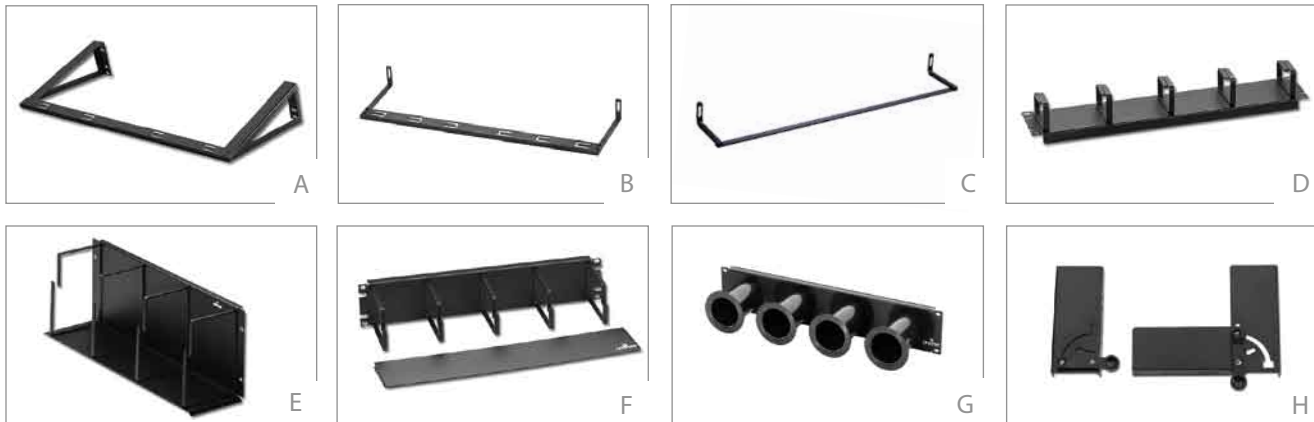
VERSI-DUCT <sup>®</sup> SLOTTED DUCT CABLE MANAGEMENT SYSTEM	
DESCRIPTION	PART NO.
Vertical Front-only Duct, 35" length (not shown)	4935L-VFO
[A] Vertical Front & Rear Duct, 35" length	4935L-VFR
[B] Vertical Front-only Duct, 80" length	4980L-VFO
[C] Vertical Front & Rear Duct, 80" length	4980L-VFR
[D] Horizontal Front & Rear Duct, 2RU	492RU-HFR
[E] Horizontal Front-only Duct, 2RU	492RU-HFO
[F] Horizontal Front-only Duct, 1RU	491RU-HFO
[G] Horizontal Front & Rear Duct, 1RU	491RU-HFR
[H] Vertical Channel Divider	49265-DV1
[I] Bend Radius Compliant Funnel, rear only	49265-FN4
[J] Cable Retainer, 10 per package	49265-WR1
[K] Duct Cover Hinge, 4 per package	49265-HNG
Extended Cover, Front-only 2RU (not shown)	49265-EX3
Extended Cover, Front-only 1RU (not shown)	49265-EX1
[L] Slack Loop Storage Organizer	49265-SL1
[M] Slack Loop Storage Organizer, extended (2")	49265-SL2
Mounting Bracket, 2 per package (not shown)	49265-BRK

Spotlight | Versi-Duct Components and Benefits



- [1] Slack Loop Storage Organizer: Stores slack cable and maintains bend radius control. Mounts on duct fingers and adjusts to fit a variety of slack loop sizes.
- [2] Bend Radius Compliant Funnel: Easily transitions cable into and out of the duct while maintaining ANSI/TIA/EIA bend radius compliance.
- [3] Vertical Channel Divider: Separates duct into two vertical sections.
- [4] Cable Retainer: Mounts to duct finger for added cable support. Accommodates all duct sizes.
- [5] Duct Cover Hinge: Opens and closes duct cover for increased protection with easy access.

## RACK & FRAME CABLE MANAGEMENT



### HORIZONTAL CABLE MANAGEMENT

Create a first class cabling infrastructure and reduce network administration time using Leviton's Horizontal Cable Management System. Options include cable management bars, patch cord organizers, slack organizers and the patent-pending Front Hinge Bracket.

[A] Rear Cable Manager for Active Equipment: Designed to organize the back of a 19" equipment rack, the rear cable manager is installed directly below active equipment to support both cables and power cords. Includes four (4) hook and loop straps.

[B-C] Cable Management Bars: Attach to standard patch panels to support and direct cable, and manage bend radius requirements. Extended Cable Management Bar provides support for large volumes of cable and includes six (6) hook and loop straps.

[D-F] Horizontal Patch Cord Organizers: Horizontal Patch Cord Organizers are available in 1RU, 2RU and 4RU sizes. The 1RU and 2RU versions route and organize cables. The 4RU organizer includes a shelf for added support of large volumes of patch cords.

[G] Slack Managers: Reduces slack by routing cable around the slack manager spools. Spools are removable for multiple configurations, and are bend radius compliant. Available in 2RU and 4RU sizes.

[H] Front Hinge Bracket: Facilitates front-end termination when rear access is unavailable. Supports cable termination in vertical, horizontal 90° or 120° positions. Holds up to three 1RU devices such as patch panels or wire management. Left and right side brackets attach to a standard 19" rack or wall-mount bracket. Patent pending.

CABLE MANAGEMENT BARS			
DESCRIPTION	HEIGHT	RINGS	PART NO.
[A] Rear Cable Manager for Active Equipment	2RU		41188-SM2
[B] Extended Cable Management Bar			49005-EMB
[C] Cable Management Bar			49005-CMB
HORIZONTAL PATCH CORD ORGANIZERS			
[D] Horizontal Patch Cord Organizer	2RU	2"	49253-2CM
Horizontal Patch Cord Organizer	2RU	4"	49253-BCM
Horizontal Patch Cord Organizer	1RU	4"	49253-LPM
[E] Horizontal Patch Cord Organizer	4RU	5"	49253-4CM
Horizontal Patch Cord Organizer	4RU	7"	49253-6CM
Horizontal Patch Cord Organizer, (Angled)	1RU	2"	4W254-LPM
Horizontal Patch Cord Organizer, (Angled)	2RU	2"	4W254-BCM
Horizontal Patch Cord Organizer, (w/ metal cover)	1RU	4"	4925C-LPM
[F] Horizontal Patch Cord Organizer, (w/ metal cover)	2RU	4"	4925C-BCM
Horizontal Patch Cord Organizer, (w/ metal cover)	4RU	5"	4925C-4CM
Horizontal Patch Cord Organizer, (w/ metal cover)	4RU	7"	4925C-6CM
SLACK MANAGERS			
[G] Slack Manager (includes 4 spools)	2RU		49300-SM2
Slack Manager (includes 6 spools)	4RU		49300-SM4
FRONT HINGE BRACKET			
[H] Front Hinge Bracket	3RU		49400-FHB

Spotlight | Front Hinge Bracket



Leviton's patent-pending Front Hinge Bracket simplifies the process of terminating cables to the rear of patch panels when access is not readily available. The uniquely designed hinge allows an attached panel to be rotated forward to multiple angles to fully support the punch down process. Easy-access, quick release latches allow the bracket to drop to horizontal 90° and 120° positions, then latch automatically without the need for manual tightening when the bracket and panel are returned to the vertical, closed position.

## RACK & FRAME CABLE MANAGEMENT

---

### RACK CABLE MANAGEMENT AND ACCESSORIES

[A, B] One and Two-Position Organizer Panels: Two-Position Cord Organizer combines horizontal and vertical distribution rings with individual routing clips for patch cord organization between patch panels. One-Position Cord Organizer is 1RU with vertical distribution rings and individual routing clips.

[C] Combo Front/Rear Manager: Manage front and rear cables/cords in a 2RU standard rack space. Oversized front rings meet larger-capacity requirements for patch cords. Rear management maintains bend radius of cables routed from vertical channels. Retention rings and fixed anchor points for 'loose-fit' or tie-wrapped bundles.

[D] Recloseable Cable Bars: Manage cable vertically and horizontally on relay racks and cabinets. 19" metal-clad horizontal bar with attached loops (Hook and Loop-Style) screws into rack to manage cables horizontally.

[E] Tie Wrap Bar: Mounts to the rear of standard TIA/EIA racks to support cable bundles and help maintain bend radius near cable terminations. Fixed anchor points for 'loose-fit' tie wrapped cables.

[F] SpaceMaker Cable Manager: Mounts to front or rear of standard TIA/EIA racks to support cable bundles and help maintain bend radius. Allows retrofit of current configurations without the need to move existing patch panels. Using existing panel screws, simply loosen screws, slide in SpaceMaker, and re-tighten screws.

[G-I] Vertical Management Components: Flexible, customizable front and rear vertical management. 'Open ring' system can be changed as needed, for total customization and on-site adaptability. An optional tie bracket and divider panel can be added to provide cord and cable separation between racks.



A, B



C



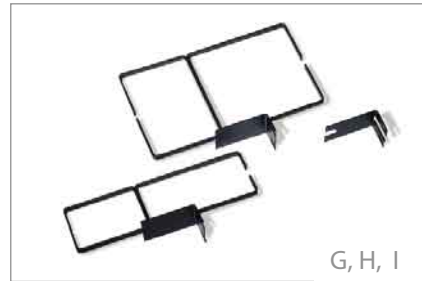
D



E



F



G, H, I

CORD ORGANIZERS	
DESCRIPTION	PART NO.
[A] Two-Position Organizer Panel (19" wide, 2RU)	49252-P02
[B] One-Position Organizer Panel (19" wide, 1RU)	49252-P01
COMBO FRONT/REAR MANAGER	
[C] Combo Front/Rear Manager (19" wide, 2RU)	49252-PCM
RECLOSEABLE CABLE BARS	
[D] Metal Clad Horizontal Bar (for 19" Racks, 1RU)	41150-019
TIE WRAP BAR	
[E] Tie Wrap Bar (19" wide, 1.0" high, 1.5" deep)	49258-TWB
SPACEMAKER CABLE MANAGER	
[F] SpaceMaker Cable Manager (19" wide, 1RU, 2RU, 3RU)	41188-SM1
VERTICAL MANAGEMENT COMPONENTS	
[G] 3" Vertical Manager Ring (4-pair cable capacity: 180 rear, 250 front)	49260-MR3
[H] 6" Vertical Manager Ring (4-pair cable capacity: 360 rear, 500 front)	49260-MR6
[I] Tie Bracket to secure vertical manager ring to adjacent rack	49261-BKT



## RACK & FRAME CABLE MANAGEMENT

---

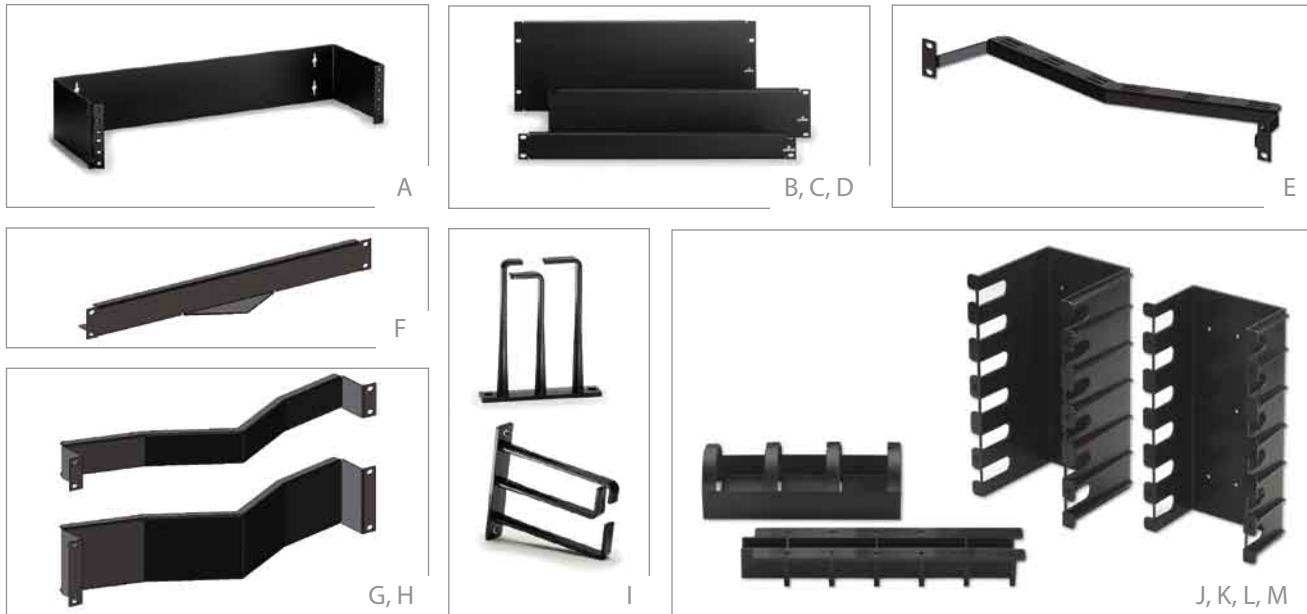
### RACK CABLE MANAGEMENT AND ACCESSORIES CONT.

[A] Hinged Wall-Mount Bracket: The Hinged Wall-Mount Bracket is designed for use in installations where space is constrained or racks are not used. Available in 2RU, 3RU and 4RU sizes.

[B-D] Front Blank Panel: Blank Panels provide a seamless look until additional rack space is needed for future expansion.

[E-I] Angled Panel Cable Management Accessories: Angled panels and accessories provide improved access to 110 punch down fields and allow the option to increase rack density. Angled Cable Management Accessories, suitable for Category 5e, 6, or 10G Angled Patch Panels, provide enhanced cable management and organization via the Angled Cable Management Bar, Vertical Transition Rings, 1RU and 2RU Angled Blank Panel Inserts, and Transitional Covers.

[J-M] 110 ChannelMax® System: The ideal tool to route and manage cables and cross-connect wires in 110-Style Wiring installations, the 110 ChannelMax System provides maximum control in minimum space. Protect cables and preserve signal integrity with 3" and 5" Cable Channels, which provide two to three times the space of typical 110 blocks with legs. The non-proprietary design works with all standard 110 blocks. Vertical Spool Managers and Horizontal Cable Management Troughs organize and support cables while allowing easy access for re-configuration. Vertical Spool Manager works with Wire Distribution Spools, PN 40054-DSS, sold separately.



**RACK & PANEL ACCESSORIES**

DESCRIPTION	PART NO.
[A] Hinged Wall-Mount Bracket 2RU	49251-W62
Hinged Wall-Mount Bracket 3RU	49251-W63
Hinged Wall-Mount Bracket 4RU	49251-W64
[B] Front Blank Panel, Standard 4RU	49254-BP4
[C] Front Blank Panel, Standard 3RU	49254-BP2
[D] Front Blank Panel, Standard 1RU	49254-BP1

**ANGLED PANEL CABLE MANAGEMENT ACCESSORIES**

[E] Angled Cable Management Bar, rear (4 hook and loop fasteners included)	4W006-AMB
[F] Transitional Cover	4W954-BC1
[G] 1RU Angled Blank Panel Inserts	4W254-BA1
[H] 2RU Angled Blank Panel Inserts	4W254-BA2
[I] Vertical Transition Ring (Horizontal Cable Ring), 2/box	49262-HR1

**110 CHANNELMAX® SYSTEM**

[J] Horizontal Cable Management Trough	41CMS-HCM
[K] Vertical Spool Manager Mounting Bracket	41CMS-VSM
[L] 5" Deep Vertical Cable Channel	41CMS-500
[M] 3" Deep Vertical Cable Channel	41CMS-300
Wire Management Spools (pictured on page C19)	40054-DSS

## HOOK & LOOP CABLE MANAGEMENT

---

### GENERAL PURPOSE HOOK & LOOP CABLE MANAGEMENT

Whatever your cable management needs, Leviton has a Hook and Loop product to keep your cable under wraps. These innovative solutions are perfect for the messy cables that accumulate around the workstation.

[A, B] Recloseable Saddle Ties: Two styles of loop, (both Hook and Loop material) secure with a screw to wood surfaces, relay racks or enclosures to manage cable. 10/32 metal rack screw or #8 wood screw versions available.

[C] Recloseable Compression Strap: Recloseable Hook and Loop cable strap is the ideal solution for heavy vertical cable runs. Stainless steel, lined with non-slipping Vintex material, the Recloseable Compression Strap accommodates bundle circumference from 3" to 9".

[D] Recloseable "J"-Hook: Hook and Loop-style "J"-hook is height-adjustable to bypass ductwork and other construction obstacles in ceilings. Adjustable circumference opens up to 8" diameter.

[E, F] Bulk Rolls of Hook and Loop Wrap: Available in 15 and 75 foot rolls, 1/2" wide, which can be custom cut for many uses. Features Hook and Loop material on both sides.

[G-I] Recloseable Tie-Wraps: Hook and Loop tie-wrap easily re-opens for moves, adds and changes. Available in 5", 8" and 12" lengths, 0.50" wide.

[J] Hook and Loop Workstation Cable Management: Hook and Loop material easily reopens for moves, adds and changes. Convenient peel-off adhesive for easy mounting. 5.25" loop.

[K] Recloseable Orange Hook and Loop Fasteners: Loops hold cable bundles up to 3" diameter. Bright orange for use with fiber cables. Fasteners are 3/4" wide.

[L] Recloseable Storage Rings: Ensure fiber optic cable bend radius with the Recloseable Storage Ring. Available in two sizes for inside or outside fiber cable management. Both rings include six sturdy Hook and Loop-Style loops for proper cable management.



RECLOSEABLE SADDLE TIES	
DESCRIPTION	PART NO.
[A] Recloseable Saddle Tie with 10/32 metal rack screw (10 per pack)	41020-SPR
[B] Recloseable Saddle Tie with #8 wood screw (10 per pack)	41010-SPW
RECLOSEABLE COMPRESSION STRAP	
[C] Recloseable Compression Strap	45224-RCS
RECLOSEABLE "J"-HOOK	
[D] Recloseable "J" Hook	46700-SLG
BULK HOOK AND LOOP WRAP	
[E] Bulk Hook and Loop Wrap, 75 Foot Roll	43115-075
[F] Bulk Hook and Loop Wrap, 15 Foot Roll	43115-015
RECLOSEABLE TIE-WRAPPS	
[G] Tie Wrap, 5" Length (25 per pack)	43105-005
[H] Tie Wrap, 8" Length (25 per pack)	43108-008
[I] Tie Wrap, 12" Length (25 per pack)	43112-012
HOOK AND LOOP WORKSTATION CABLE MANAGEMENT	
[J] Individual Loops with Peel-off Adhesive (25 per pack)	41225-SAP
RECLOSEABLE FASTENER	
[K] Recloseable Fasteners (orange) (10 per pack)	41030-OFT
RECLOSEABLE STORAGE RINGS	
[L] Recloseable Storage Ring, Inside Plant (11.75" diameter)	48900-IFR
Recloseable Storage Ring, Outside Plant (24" diameter)	48900-OFR

## NETWORK BAYS & FRAMES

---

### FDF FIBER DISTRIBUTION FRAMES & NETWORK BAYS

[A] The 23" LGX® Fiber Distribution Frame (FDF) is designed to meet the strict requirements of the central office environment. Compatible with legacy systems, the LGX FDF is also ideal for headends, remote terminals and co-locations. The basic FDF includes an upper horizontal trough, lower horizontal trough, single-wide jumper retaining rings and rear management rings for incoming cables.

[B] Leviton's 19" and 23" Network Bays meet essential storage requirements for the head end or central office environment. Network Bays are shipped assembled and include 2 side pieces, guard rail, base, and cover plates. All parts are manufactured of rugged carbon steel and painted standard Network Blue (Telephone Grey available upon special request).

### ACCESSORIES

Rear Door Kit: Provides protection and security for the rear area of the Fiber Distribution Frame. Mounts easily with supplied hardware.

End Guard Kit: Provides protection and security for the side area of the Fiber Distribution Frame. Mounts easily with supplied hardware.

Interbay Management Panel: Provides a simple means of storing and routing patch cord slack within and between fiber frames. Comes with eight management spools and a base filler. Splice plates allow installation at the end of an aisle or in between adjacent frames.

Cross Aisle Trough Assembly: Provides a protected cross aisle patch cord raceway between front-facing fiber distribution frame lineups. Adjustable to pathways of 42" to 50".



[Rear Door Kit and End Guard Kit pictured in sample installation]

FDF FIBER DISTRIBUTION FRAMES & NETWORK BAYS

DESCRIPTION	PART NO.
[A] 7' LGX FDF Fiber Distribution Frame	DF232-BLU
[B] 19" Network Bay, 1.75" mounting hole pattern	NB191-BLU
19" Network Bay, 2.00" mounting hole pattern	NB192-BLU
23" Network Bay, 1.75" mounting hole pattern	NB231-BLU
23" Network Bay, 2.00" mounting hole pattern	NB232-BLU
Single Wide Jumper Retaining Rings, set of 18	JRKIT-109
Double Wide Jumper Retaining Rings, set of 9	JRKIT-209

ACCESSORIES

DESCRIPTION	PART NO.
LGX Rear Door Kit (Compatible w/ LGX Fiber Distribution Frame)	RDKIT-BLU
End Guard Kit	EGKIT-BLU
Interbay Management Panel	INTBY-BLU
LGX Cross Aisle Trough Assembly (Compatible w/ LGX Fiber Distribution Frame)	LCATA-BLU

## SPECTRO-LINK® RACEWAY SYSTEM

---

### SPECTRO-LINK RACEWAY SYSTEM

Leviton's Spectro-Link Raceway System is an adaptable cable management system for fiber optic networks. Installed in data centers, entrance facilities and equipment rooms, this versatile system provides a dedicated path to route, protect and store fiber.

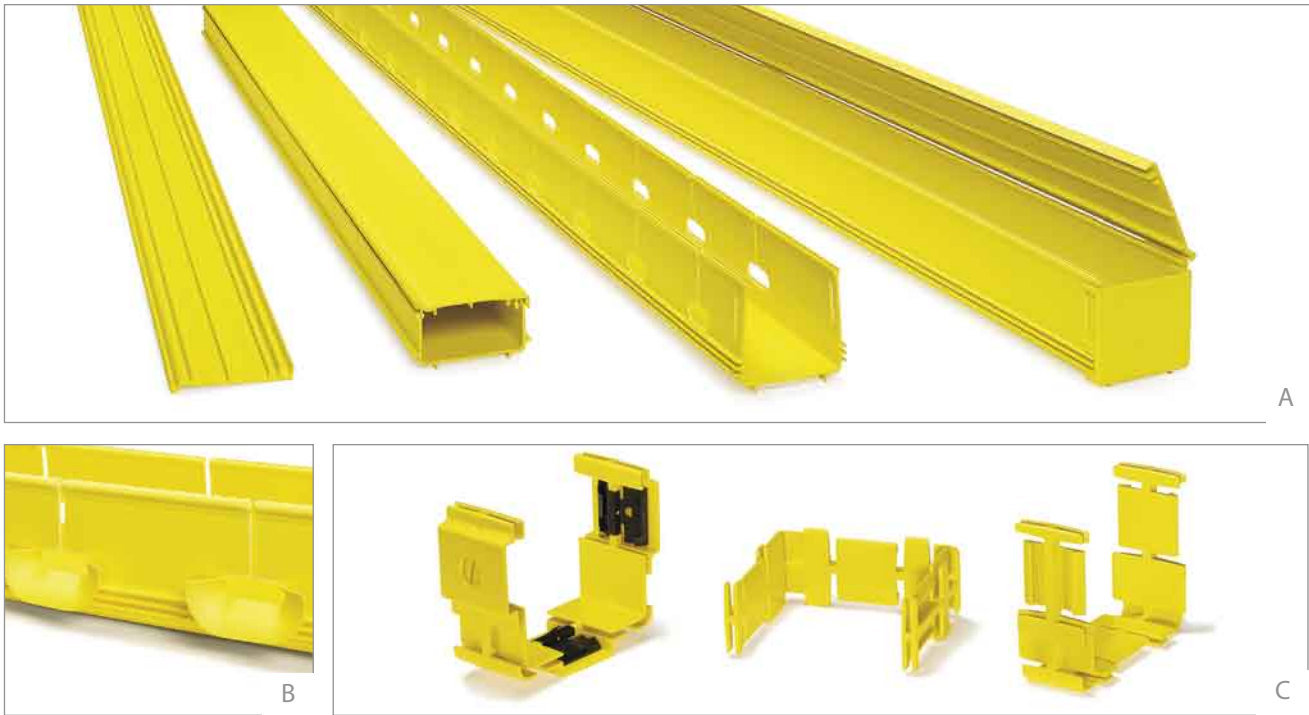
With a variety of sizes and components, Spectro-Link is adaptable to any fiber application, making it easy to design and configure each installation - large or small, new or retrofit. Snap-together connection components, including non-intrusive vertical and horizontal outlets and hardware-free covers, simplify installation and maintenance.

Spectro-Link is available in five sizes. Versatile mounting kits allow installation above equipment racks and frames, on raised floor support brackets, under flooring, or on walls, ladder rack, or uni-strut. High impact thermoplastic construction and robust design ensure long system life. All plastic parts are UL 94V0 rated and fabricated from materials with zero halogen content.

[A] Ducting: Ideal for routing and supporting cables throughout fiber systems. All ducting and covers are 6.5 feet long and can be hand cut to fit exact specifications. Solid ducting is available in 5 sizes, with regular or hinged covers, for complete installation flexibility. Slotted ducting is ideal for carrying a high volume of pigtails or patch cords that must exit at multiple locations, and is available in 2 sizes.

[B] Bend Radius Guide: Attach to slotted duct to safely route and "guide" fiber from raceway at various exit points while maintaining proper bend radius compliance.

[C] Joiners: Create a strong, rigid connection between ducting sections and other components with Joiners and Slotless Joiners. Slotless Joiners will join all components to ducting, including ducting that has been cut to size and does not have end slots.

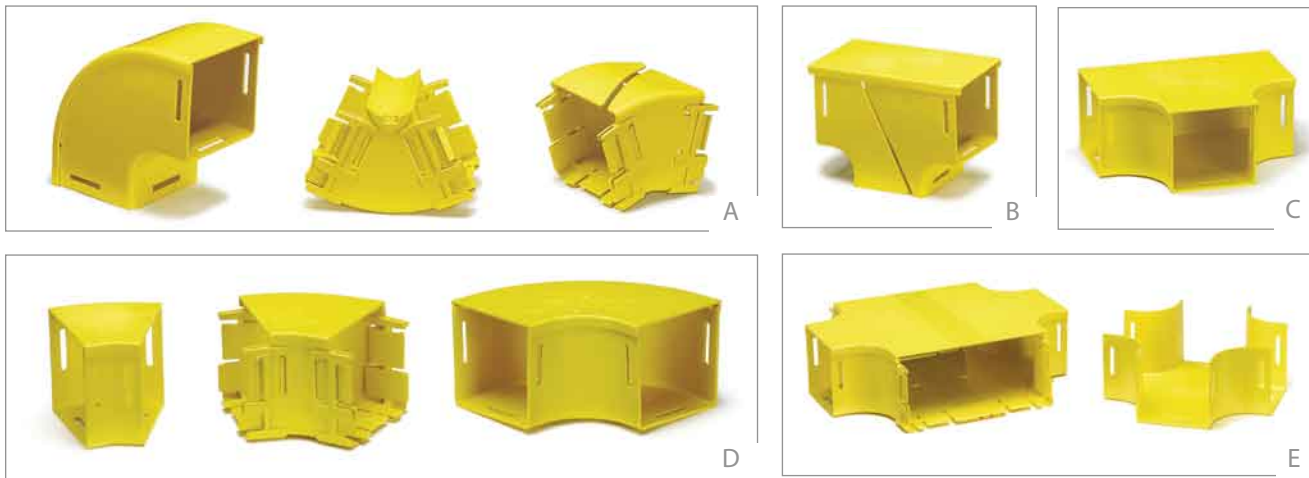


[A] DUCTING					
DESCRIPTION	4" x 4"	4" x 8"	4" x 12"	2" x 2"	2" x 4"
Solid Duct	S4DCT-SDT	S8DCT-SDT	SWDCT-SDT	S2DCT-SDT	SLDCT-SDT
Solid Duct & Cover	S4DCT-SDC	S8DCT-SDC	SWDCT-SDC	S2DCT-SDC	SLDCT-SDC
Solid Duct & Hinged Cover	S4DCT-DHC	S8DCT-DHC		S2DCT-DHC	SLDCT-DHC
Slotted Duct	S4DCT-DSL			S2DCT-DSL	
Slotted Duct & Cover	S4DCT-DCS			S2DCT-DCS	
Slotted Duct & Hinged Cover	S4DCT-SHC				
[B] BEND RADIUS GUIDE					
Radius Guide (10 pack fits slotted duct)	SRAGD-SLT			SRAGD-SLT	
[C] JOINERS					
Joiner	S4JNR-SLT	S8JNR-SLT		S2JNR-SLT	SLJNR-SLT
Slotless Joiner	S4JNR-SLS	S8JNR-SLS	SWJNR-SLS		

Note: Dimensions listed as height x width. Dimensions converted from the metric system.



## SPECTRO-LINK® RACEWAY SYSTEM



## CONNECTING COMPONENTS

[A] Vertical Elbows: Vertical Elbows are available in 5 sizes, 30°, 45° or 90° angles, with or without covers. Retrofit styles allow easy addition of new fibers. These components are used to connect horizontal raceway routes at different heights or to allow the fiber raceway to be raised or lowered to avoid obstacles.

[B] Vertical Tees: Vertical Tees provide the perfect inline drop-off point for large numbers of cables going to fiber distribution frames or other high volume equipment. Available in 5 sizes, with or without covers.

[C] Horizontal Tees: Tees are also available in five sizes, with or without covers, and provide additional configuration options to fit any space. They are used to branch off the duct and extend the fiber route.

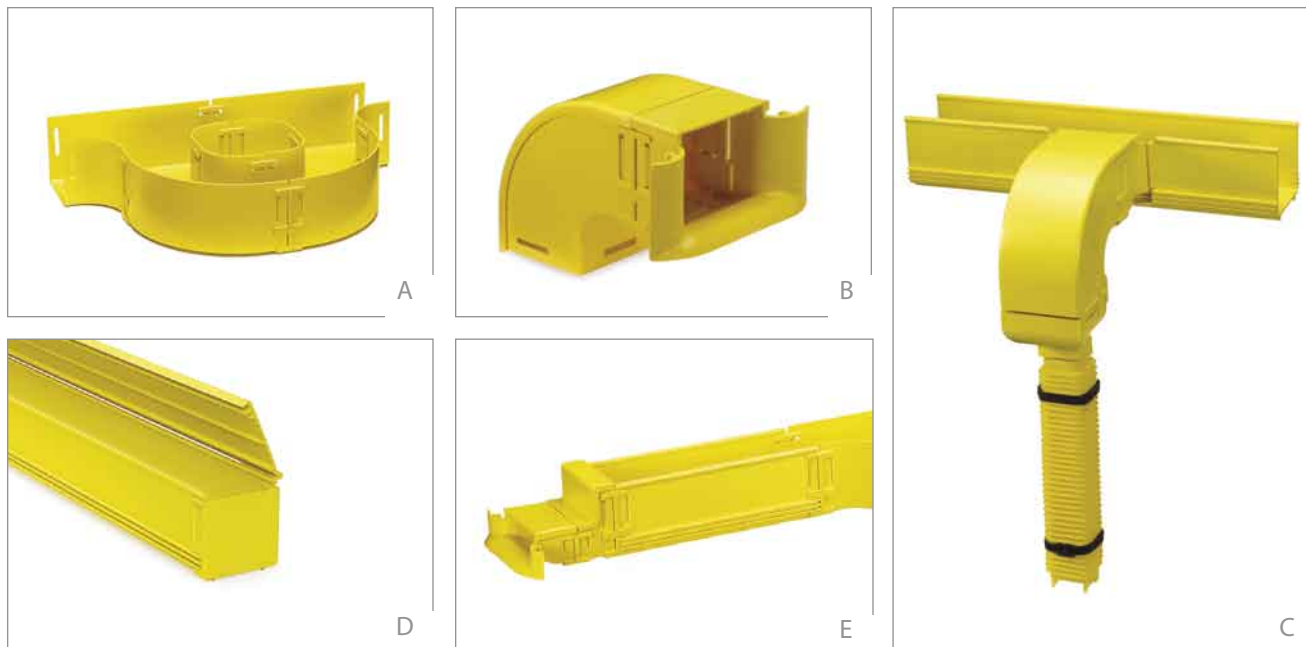
[D] Horizontal Elbows: Horizontal Elbows are available in 5 sizes, 30°, 45° and 90° angles with or without covers. These components are used to change the direction of horizontal routes.

[E] Horizontal Crosses: Crosses allow easy fiber routing in all directions for increased expansion and adaptability, and are available in 5 sizes, with or without covers.

[A] VERTICAL ELBOWS					
DESCRIPTION	4" x 4"	4" x 8"	4" x 12"	2" x 2"	2" x 4"
Vertical Elbow 30 Deg Down	S4VEL-30D	S8VEL-30D		S2VEL-30D	
Vertical Elbow 30 Deg Down & Cover	S4VEL-3DC	S8VEL-3DC		S2VEL-3DC	
Vertical Elbow 30 Deg Down Retrofit	S4VEL-3DR	S8VEL-3DR			
Vertical Elbow 30 Deg Up	S4VEL-30U	S8VEL-30U			
Vertical Elbow 30 Deg Up & Cover	S4VEL-3UC	S8VEL-3UC			
Vertical Elbow 30 Deg Up Retrofit	S4VEL-3UR	S8VEL-3UR			
Vertical Elbow 45 Deg Down	S4VEL-45D	S8VEL-45D	SWVEL-45D	S2VEL-45D	
Vertical Elbow 45 Deg Down & Cover	S4VEL-4DC	S8VEL-4DC	SWVEL-4DC	S2VEL-4DC	
Vertical Elbow 45 Deg Down Retrofit	S4VEL-4DR	S8VEL-4DR			
Vertical Elbow 45 Deg Up	S4VEL-45U		SWVEL-45U		
Vertical Elbow 45 Deg Up & Cover	S4VEL-4UC	S8VEL-4UC	SWVEL-4UC	S2VEL-4UC	
Vertical Elbow 45 Deg Up Retrofit	S4VEL-4UR	S8VEL-4UR			
Vertical Elbow 90 Deg Down	S4VEL-90D	S8VEL-90D	SWVEL-90D	S2VEL-90D	SLVEL-90D
Vertical Elbow 90 Deg Down & Cover	S4VEL-9DC	S8VEL-9DC	SWVEL-9DC	S2VEL-9DC	SLVEL-9DC
Vertical Elbow 90 Deg Down Retrofit	S4VEL-9DR	S8VEL-9DR			SLVEL-9DR
Vertical Elbow 90 Deg Up	S4VEL-90U	S8VEL-90U	SWVEL-90U	S2VEL-90U	SLVEL-90U
Vertical Elbow 90 Deg Up & Cover	S4VEL-9UC	S8VEL-9UC	SWVEL-9UC	S2VEL-9UC	SLVEL-9UC
Vertical Elbow 90 Deg Up Retrofit	S4VEL-9UR	S8VEL-9UR		S2VEL-9UR	SLVEL-9UR
Vertical Elbow 90 Deg Up & Down Enclosed	S4VEL-9UD	S8VEL-9UD			
[B] VERTICAL TEES					
Vertical Tee	S4VTE-TEE	S8VTE-TEE	SWVTE-TEE	S2VTE-TEE	SLVTE-TEE
Vertical Tee & Cover	S4VTE-TEC	S8VTE-TEC	SWVTE-TEC	S2VTE-TEC	SLVTE-TEC
Vertical Tee Retrofit	S4VTE-TER	S8VTE-TER		S2VTE-TER	
[C] HORIZONTAL TEES					
Horizontal Tee	S4HTE-TEE	S8HTE-TEE	SWHTE-TEE	S2HTE-TEE	SLHTE-TEE
Horizontal Tee & Cover	S4HTE-TEC	S8HTE-TEC	SWHTE-TEC	S2HTE-TEC	SLHTE-TEC
[D] HORIZONTAL ELBOWS					
Horizontal Elbow 30 Deg	S4HEL-30D	S8HEL-30D		S2HEL-30D	
Horizontal Elbow 30 Deg & Cover	S4HEL-3DC	S8HEL-3DC		S2HEL-3DC	
Horizontal Elbow 45 Deg	S4HEL-45D	S8HEL-45D	SWHEL-45D	S2HEL-45D	
Horizontal Elbow 45 Deg & Cover	S4HEL-4DC	S8HEL-4DC	SWHEL-4DC	S2HEL-4DC	
Horizontal Elbow 90 Deg	S4HEL-90D	S8HEL-90D		S2HEL-90D	SLHEL-90D
Horizontal Elbow 90 Deg & Cover	S4HEL-9DC	S8HEL-9DC	SWHEL-9DC	S2HEL-9DC	SLHEL-9DC
[E] HORIZONTAL CROSSES					
Horizontal Cross	S4HCR-HCR	S8HCR-HCR	SWHCR-HCR	S2HCR-HCR	SLHCR-HCR
Horizontal Cross & Cover	S4HCR-HCC	S8HCR-HCC	SWHCR-HCC	S2HCR-HCC	SLHCR-HCC

Note: Dimensions listed as height x width. Dimensions converted from the metric system.

## SPECTRO-LINK® RACEWAY SYSTEM



[ Shown above: Side Drop Off Kit &amp; Square Tubing ]

## CONNECTING COMPONENTS

[A] Fiber Storage Loops: Store excess patch cord lengths in an organized manner. Choose inline loops to contain fiber within the duct system or the offset style for storing fiber away from main duct.

[B] Side Drop Off Kit: Ideal for providing a safe exit for fiber cords at any point along ducting in order to drop down to active equipment or work areas.

[C] Tubing: Used to manage fiber as it enters or exits equipment rack ducting. Tubing is convoluted/ribbed to allow for adjustment if drops cannot be positioned directly in line with equipment.

[D] End Caps: End caps snap into place to seal the open end of standard ducting and can easily be removed for future system extension. Some are solid-walled, others have knockouts for convoluted tubing or fiber feedout.

[E] Reducers: Reducers are used to join together ducting of varying sizes. Connect a 4" x 8" piece of ducting to a 4" x 4" system, or make other adjustments to match duct size with fiber capacity and storage needs.

Adapters: Adapters are used to connect Spectro-Link ducting to other brands. See part number chart for details.

[A] STORAGE LOOPS				
DESCRIPTION	4" x 4"	4" x 8"	2" x 2"	2" x 4"
Fiber Storage Loop Inline	S4FSL-INL	S8FSL-INL	S2FSL-INL	
Fiber Storage Loop Offset	S4FSL-OFF	S8FSL-OFF		
[B] SIDE DROP OFF KITS				
Side Drop Off Kit (for Duct Raceway)	S4DRP-DRP		S2DRP-DCT	SLDRP-DCT
Side Drop Off Kit (for Round Tube)			S2DRP-TUB	
Side Drop Off Kit (for Square Tube)			S2DRP-STB	
Outlet Trumpet	S4TRM-TRM		S2TRM-TRM	

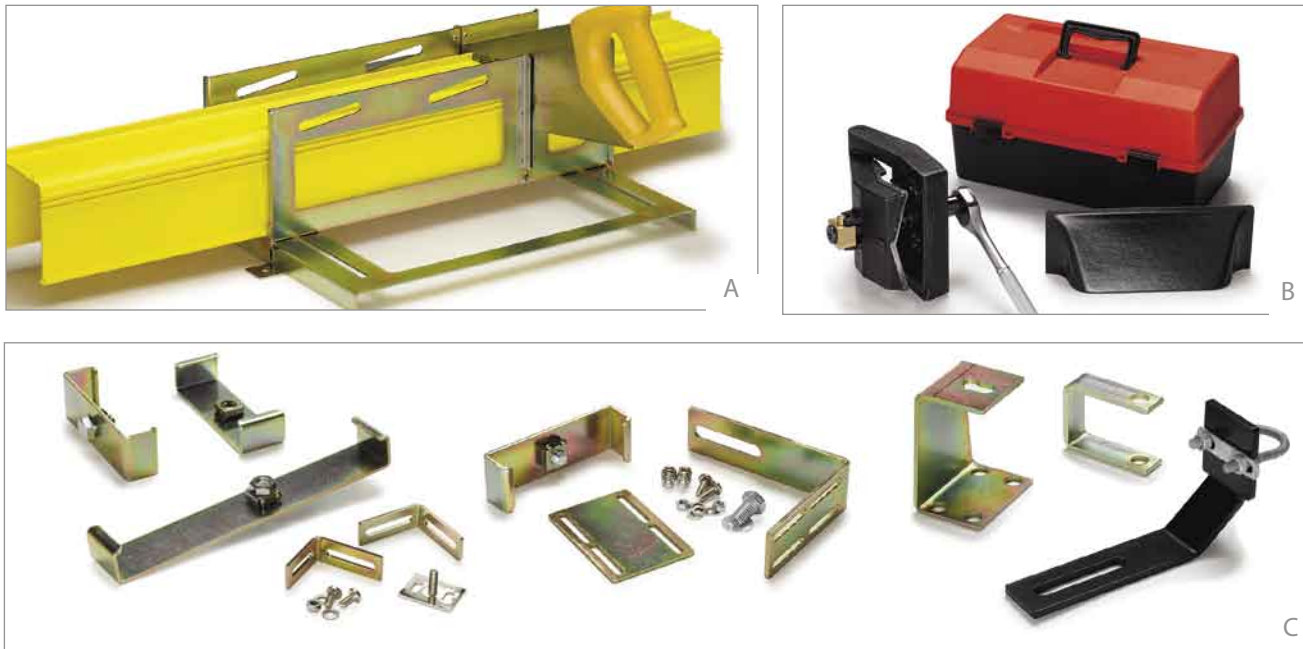
[C] TUBING	
DESCRIPTION	PART NO.
Round, 2" Diameter, 39" length	S50RT-01M
Round, 2" Diameter, 78" length	S50RT-02M
Round, 1" Diameter, 78" length	S25RT-02M
Round, 1.5" Diameter, 78" length	S38RT-02M
Round, split, .75" Diameter, 78" length	S20RS-02M
Square, 2", 14" length	S50ST-350
Square w/cover, 2", 14" length	S5STC-350
Square, 1.25", 14" length	S30ST-350

[D] END CAPS	
	4" x 4"
End Cap	S4END-CAP
End Cap Slotless	S4END-CSL
End Cap 2 x 1.25" Diameter Knockout	S4END-32D
End Cap 2 x 1.75" Diameter Knockout	S4END-46D
	4" x 8"
End Cap	S8END-CAP
End Cap Slotless	S8END-CSL
	4" x 12"
End Cap Slotless	SWEND-CSL
	2" x 2"
End Cap - 2 x .75" Diameter Knockout	S2END-20D
End Cap - 1 x 1.5" Diameter Knockout	S2END-38D
End Cap - 1 x 1.5" Hole	S2END-38H
End Cap - Tube Outlet for 2" Tube	S2END-OUT
	2" x 4"
End Cap	SLEND-CAP

[E] REDUCERS	
	4" x 4"
Reducer To 2"	S4RDR-RDR
Reducer To 2" & Cover	S4RDR-RDC
Reducer To 2" X 4"	S4RDR-RDL
Reducer To 2" X 4" & Cover	S4RDR-RLC
	4" x 8"
Reducer To 4" & Cover	S8RDR-RDC
Reducer To 4" Right Hand	S8RDR-RRH
Reducer To 4" Right Hand & Cover	S8RDR-RHC
Reducer To 4" Left Hand	S8RDR-RLH
Reducer To 4" Left Hand & Cover	S8RDR-LHC
	4" x 12"
Reducer To 4" x 8"	SWRDR-RDR
Reducer To 4" x 8" & Cover	SWRDR-RDC
	2" x 4"
Reducer to 2"x 2"	SLRDR-RDR
Reducer to 2"x 2" & Cover	SLRDR-RDC
ADAPTERS	
	4" x 4"
Adapter Kit To ADC 4"	S4ADP-ADC
Adapter Kit To ADC 4" Tee	S4ADP-TEE
	4" x 8"
Left Hand Adapter Kit To ADC 6"	S8ADP-LAD
Right Hand Adapter Kit To ADC 6"	S8ADP-RAD
Adapter Kit To ADC 6" Tee	S8ADP-TEE

Note: Dimensions are listed as height x width.  
Dimensions converted from the metric system.

## SPECTRO-LINK® RACEWAY SYSTEM



## SPECTRO-LINK TOOLS &amp; HARDWARE

[A, B] Tools: Tool Kits are available for cutting and slotting duct during installations or upgrades. Cut Out Tools prepare ducting for the addition of a side drop off kit enabling drops to be added as the system grows. The Mitre Box provide a stable cutting channel to ensure accuracy and safety when cutting 4", 8", or 12" ducting.

[C] Mounting Hardware: An extensive selection of mounting hardware enables Spectro-Link to be installed above equipment racks and frames, under flooring, or on walls, ladder rack or unistrut.

TOOLS	
DESCRIPTION	PART NO.
[A] Mitre Box (for 4", 8"& 12" ducting)	SMTRE-300
[B] 2" Side Cut Out Tool Kit	S2CUT-TOL
4" Side Cut Out Tool Kit	S4CUT-TOL
2" & 4" Slot End Tool	SSLOT-100
4" & 8" Slot End Tool	SSLOT-200
[C] MOUNTING HARDWARE	
4" Wide Duct Mounting Kit	S4MNT-KIT
8" Wide Duct Mounting Kit	S8MNT-KIT
4" Extension To 10"	S4EXT-KIT
8" Extension To 14"	S8EXT-KIT
2" Duct Mounting Bracket	S2DMB-000
4" Duct Mounting Bracket	S4DMB-000
8" Duct Mounting Bracket	S8DMB-000
12" Duct Mounting Bracket	SWDMB-000
Mounting Hardware Bracket & Stud Screw	SMH00-BSS
Mounting Hardware Right Angle Bracket	SMH00-RAN
Mounting Hardware Side Mount Bracket	SMH00-SMB
Under Concrete Floor Mount Kit	SUCFM-000
12" Suspension Kit with 3.3' Rod	SWSUS-KIT
12" Suspension Kit without Rod	SWSUS-WRD
8" Suspension Kit with 3.3' Rod	S8SUS-KIT
4" Suspension Kit with 3.3' Rod	S4SUS-KIT
2" Raised Mounting Kit	S1RMK-000
4" Raised Mounting Kit	S4RMK-000
8" Raised Mounting Kit	S8RMK-000
12" Raised Mounting Kit	SWRMK-000
Under Floor Mounting Kit	SUFMK-000
4" Ladder Rack/Unistrut Mounting Kit	S4LRU-000
2" Ladder Rack/Unistrut Mounting Kit	S1LRU-000
8" Ladder Rack/Unistrut Mounting Kit	S8LRU-000
Bracket To Mount Kits To 2" Unistrut	SBRCK-000